

ART RESERVOIR

The museum as a part of urban life. | Urban life as part of the museum.



Fig. 1

An attempt was made to create a minimal intervention to make the ancient structure usable. Architecture in this case acts as a link between the functions of Roman ruin, contemporary art museum and social meeting place.

The addition of two ramps creates an architecture that illuminates the features

of the Roman ruins from different perspectives and does not attempt to be historicizing. The structure under the upper ramp is made of glass and acts as a showcase of the ruin in the urban context. The roof is mainly used as a flexible public space and can easily be adapted to the different needs of specific events. The intervention is intended to highlight the panoramic view.

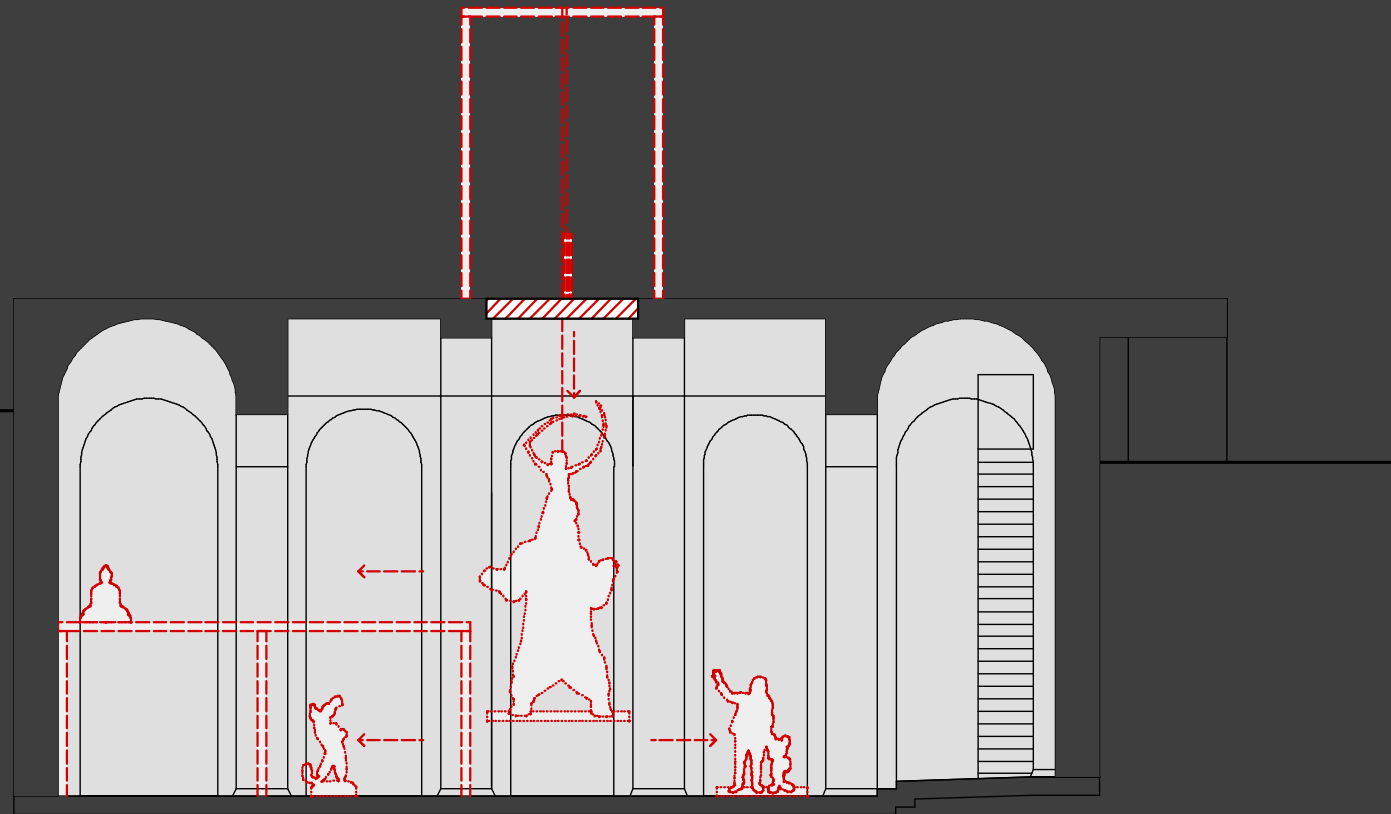
Design



The chosen exhibition was „Treasures from the Wreck of the Unbelievable“. It was a rescue mission of a sunken ship, which was financially supported by the artist Damien Hirst. The found sculptures originally belonged to the freed slave Aulus Calidius Amotan, who lived in the middle of the first and at the beginning of the second century CE. On the way to the newly built temple the ship sank in a storm.

According to a historical report, the works of art were shipped for the second time. Due to unrest in Turkey, some of the sculptures were taken to a war port near Vesuvius. The hiding place is described as an underground columned hall. This would also explain the holes in the roof through which the sculptures could have been brought inside.

Treasures from the
Wreck of the Unbelievable
Damien Hirst



Can architecture become part of an artwork?

Would a rich artist finance the construction of a museum for one exhibition?

Can exhibitions by other artists also be shown in such a museum?



A new connection to the promenade extends the axis of the walkway at Lago Miseno and leads visitors to the museum. A sculpture is positioned on the path, which should refer to the museum.

Additional Footpath



Parrocchia S. Anna Gesù e Maria
sculptures

Cento Camerelle
sculptures
pictures

Villa Comunale di Bacoli
large sculptures
concerts
theatre

A part of the exhibition also shows art in public spaces and other ancient ruins. This was intended to act as a teaser and create a connection between the museum and urban life. This also enables it easier to vary the size of exhibitions.

Public Spaces



Part of the museum's connection with the city is to move the art lessons directly to the museum. Various parts can be used for this purpose, such as the public space on the roof or the conference room. This should create an understanding of art from childhood on.

School

Fig. 6



To create a social meeting place, the commercial space should be kept small. Therefore the concept of an „expensive“ restaurant is switched to streetfood. This should attract people from all social classe. Alternatively, restaurants within close proximity can also be used.

Streetfood

Fig. 7



Part of the Museum's link with the local community is to integrate cultural institutions of Bacoli into the structure of the Museum. Besides their room in the arch, they use the roof as a practice room and the conference room for their meetings.

Local Institutions



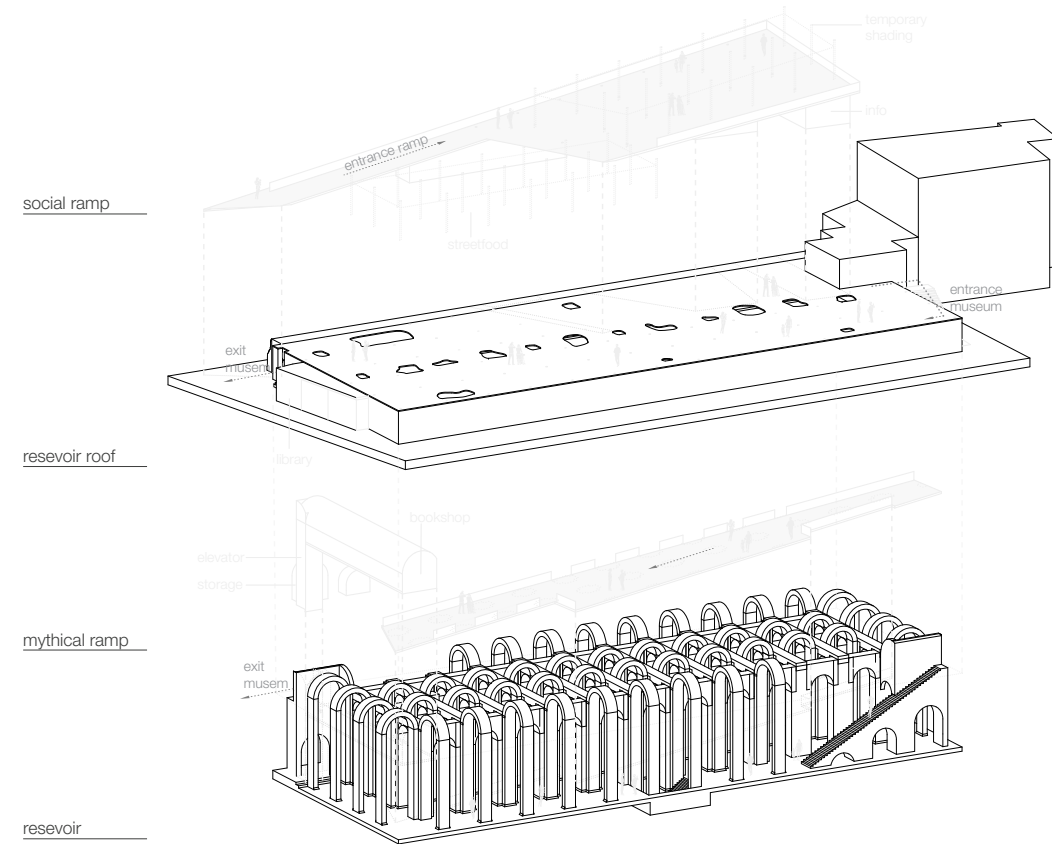
Fig. 9



Fig. 10

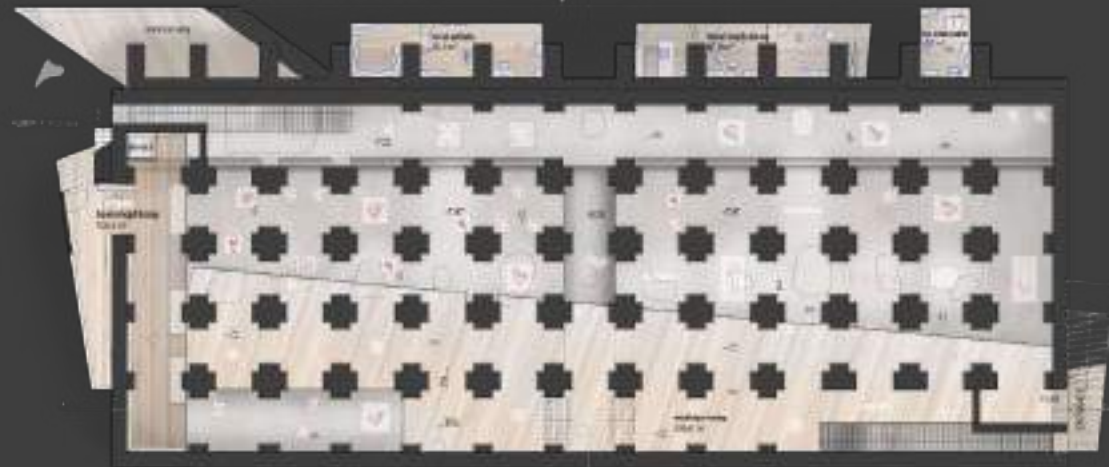
The conversion of the ancient reservoir is considered only as a small part in the life cycle of the building. For this reason wood is used with its properties of natural decay. The material shows the decay of the building on its surface while it is being used as a museum and, like the wooden structures of old temples, rots in the long run.

Wood



Exploded View

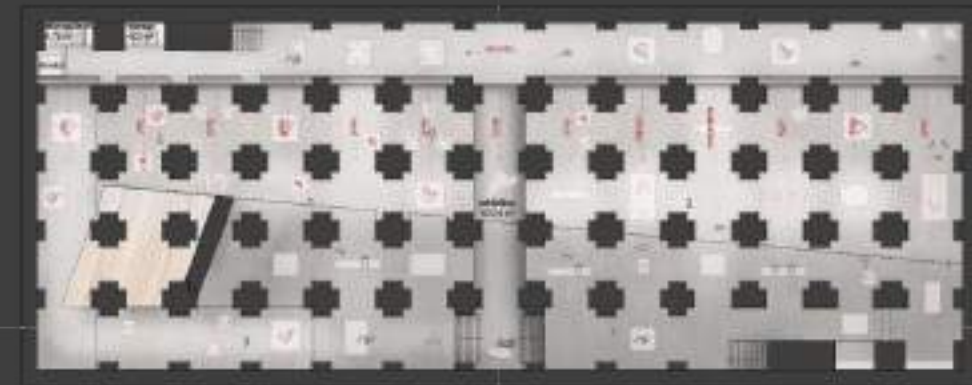




Level -1 (H=+1,00m)
Fig. 14

0 2,5 5 10

Level -1 (H=+6,23m)
Fig. 15



0 2,5 5 10



Section A-A
Fig. 16

0 2,5 5 10



Section B-B
Fig. 17

0 2,5 5 10

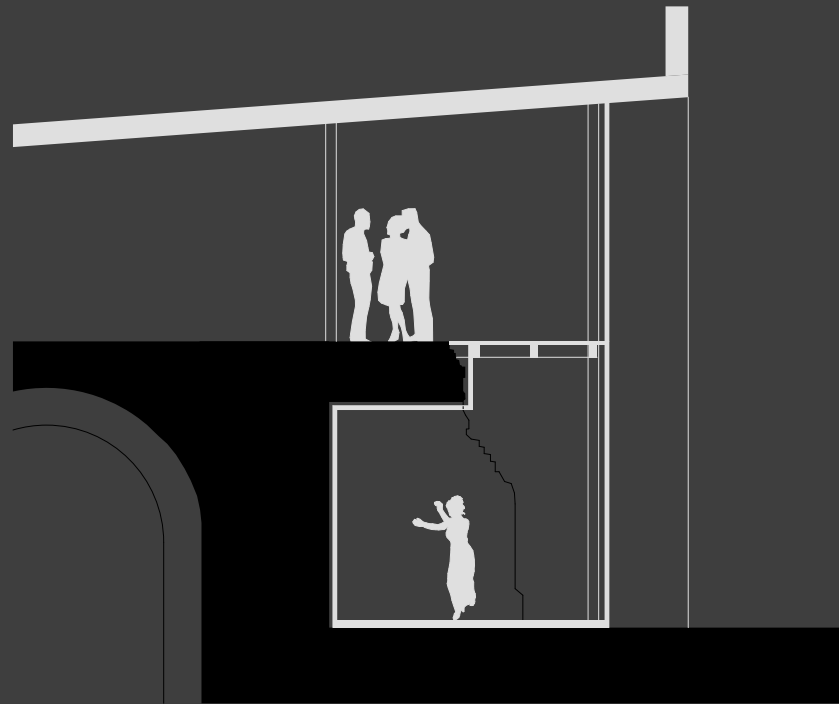


View North
Fig. 18

0 2,5 5 10

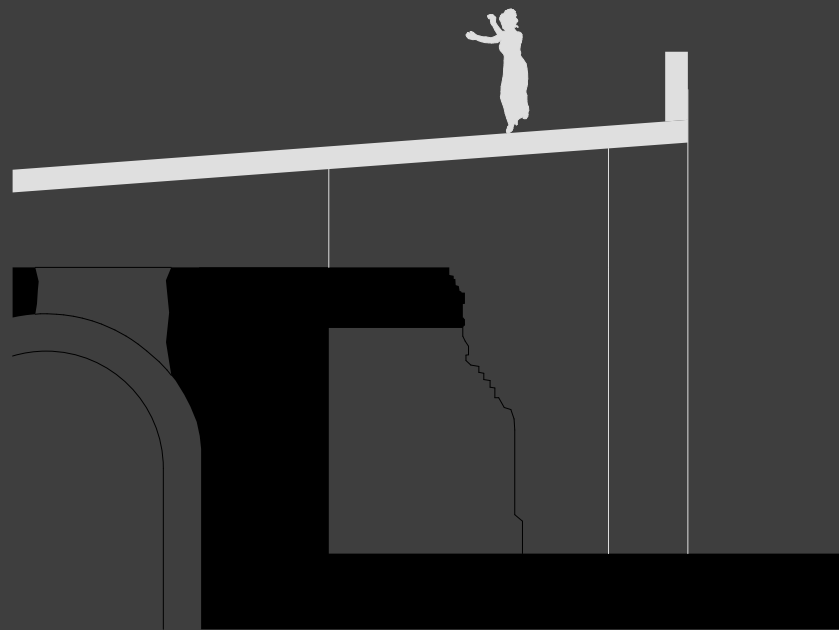


Fig. 19



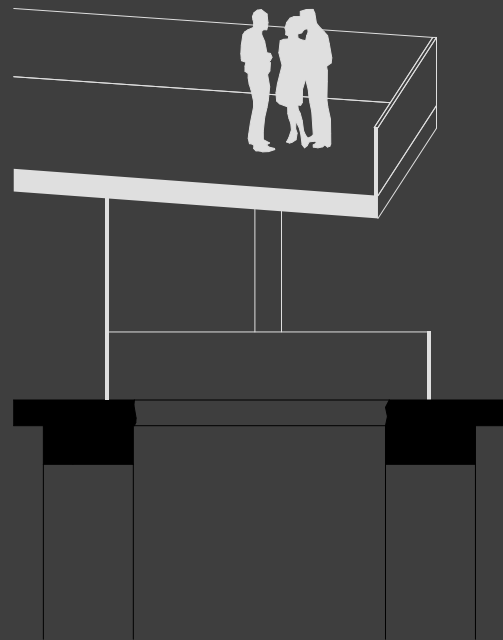
The new structure has a gap to the old walls. This should guarantee that the Roman ruin is not destroyed while it is used as a museum.

Conference Room



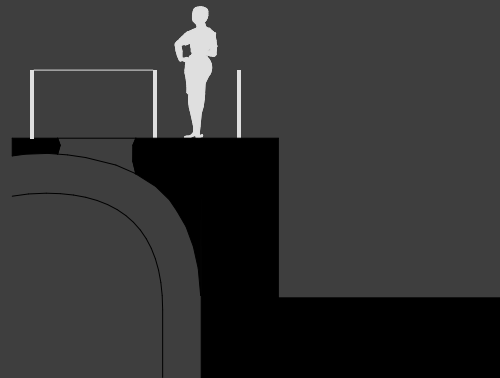
A free space between the wooden structure and the glass wall of the conference room should frame the ancient structure. Also the hole under the wooden roof should be exposed by the sunlight.

Roof North



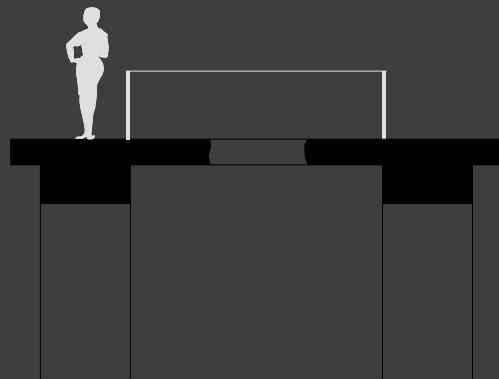
The cantilever of the wooden construction should create an entrance situation and shade the rooms below.

Roof South



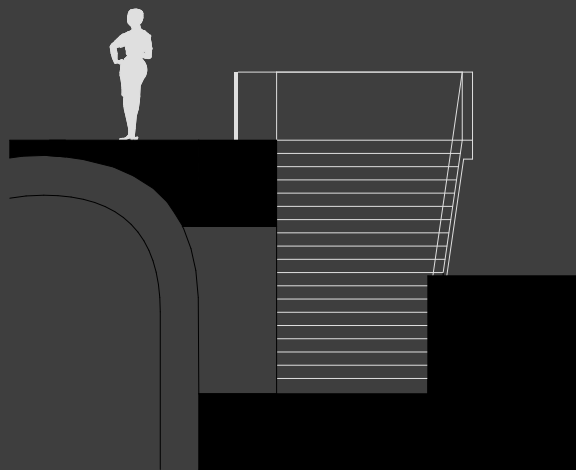
To respect the old structure, new installations such as the parapet have a significant offset to the rear and should highlight the ancient structure.

Roof Piscina



Holes in the roof are cordoned off by a railing. This serves the safety of the visitors and is also intended to show the decay process that has a direct impact to the atmosphere of the interior.

Roof Hole



The entrance stairs represent the transition between the upper part and the underground space. In addition to the stairs there is an elevator platform.

Entrance Stairs

Figure 001	Figure 010	Figure 019	Figure 028
- own illustration	- www.stockvault.net	- own illustration	- own illustration
Figure 002	Figure 011	Figure 020	Figure 029
- artroad.org	- own illustration	- own illustration	- own illustration
Figure 003	Figure 012	Figure 021	Figure 030
- own illustration	- own illustration	- own illustration	- own illustration
Figure 004	Figure 013	Figure 022	Figure 031
- Google LLC	- own illustration	- own illustration	- own illustration
Figure 005	Figure 014	Figure 023	Figure 032
- Google LLC	- own illustration	- own illustration	- own illustration
Figure 006	Figure 015	Figure 024	Figure 033
- Google LLC	- own illustration	- own illustration	- own illustration
Figure 007	Figure 016	Figure 025	Figure 034
- Google LLC	- own illustration	- own illustration	- own illustration
Figure 008	Figure 017		Figure 035
- cdn.shortpixel.ai	- own illustration		- own illustration
Figure 009	Figure 018		Figure 036
- www.mtextur.com	- own illustration		- own illustration

List of Figures

EP Entwurfsstudio 2 - G822288
Summer semester 2020

Supervisors
Spec. Pop Florina, M
Scherer Markus

Thaler Andreas